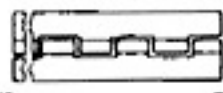


**MS 20257**Hinge,  
ContinuousAl Alloy  
CRES. Steel

SUPERSEDES AN257

**MS 20270-20271**Joint  
UniversalPer Mil-J  
6193A

SUPERSEDES AN270/AN271

**MS 20341**Nut, Plain  
Hexagon  
ElectricalBrass  
2B Fit

SUPERSEDES AN341

**MS 20364/5**Nut, Self-Locking  
250°FSteel Al Alloy  
Monel  
Available  
in CRES.  
3B FitMS 20364 MS 20365  
SUPERSEDES AN364/AN365**MS 20392**Pin, Headed  
Drilled Shank  
(Clevis)Steel  
Available  
in CRES.

SUPERSEDES AN392-AN406

**MS 20426-20470**Rivets, Solid  
and TubularAluminum  
Al Alloy  
CRES. Steel  
Monel  
Copper  
Steel

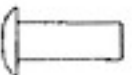
100° CT5K

Round  
HeadFlat  
HeadUniversal  
HeadSUPERSEDES AN426/AN427 (In Part)  
AN435/AN450/AN470**MS 20500-20501**Nuts,  
Self-Locking  
Hexagon  
and Plate  
1200°FCRES. Steel  
3B Fit

MS 20500

**MS 20600-20606**Rivet, Blind  
Structural &  
Non-StructuralAl Alloy  
Monel

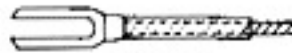
MS 20600

**MS 20613-20615**Rivet, Solid  
UniversalSteel  
CRES. Steel  
Monel  
Copper

SUPERSEDES MS 20435 (In Part)

**MS 20658-20659**Terminal  
Wire Rope,  
Fork End; Lug  
Crimp StyleSteel  
CRES. Steel  
Copper  
BronzeMS 20658  
SUPERSEDES AN658/AN659**MS 20663-20664**Ball End,  
Wire Rope  
SwagingSteel  
CRES. Steel

SUPERSEDES AN663/AN664

**MS 20667-20668**Terminal  
Wire Rope  
Fork End,  
Eye EndMS 20667  
SUPERSEDES AN667/AN668**MS 20757-20913**Fittings,  
Elbows, and  
ConnectorsAl Alloy  
Steel  
Brass  
CRES. SteelMS 20822  
SUPERSEDES AN757-AN913**MS 20995**

Wire, Lock

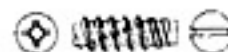


CRES. Steel

SUPERSEDES AN995

**MS 21000-21001**Pin, Flathead  
Hi-ShearSteel  
(Heat Treated)**MS 21025**Nut, Castellated  
Bearing RetainingSteel  
Alloy Steel  
3B FitInactive  
for Design**MS 21040**Nut, Self-Locking  
Hexagonal, 500°F  
INACTIVE FOR DESIGN—  
USE MS 21042

Steel

**MS 21042-21046**Nut,  
Self-Locking  
Ring BaseSteel  
CRES. Steel  
Al Alloy  
MonelSUPERSEDES MS 20365, AN366,  
NAS1021, AN363**MS 21207**100° Flathead  
Tapping ScrewSteel  
CRES. Steel

Type B



Type BF



Type BG

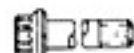
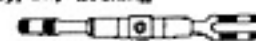


Type BT

**MS 21208-21209**Insert, Screw  
Thread, Helical  
Coil

CRES. Steel

(Free Running and Lock Thread)

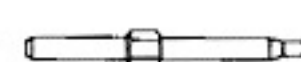
**MS 21250**Bolt, 12PT  
External  
WrenchingAlloy Steel  
3A Fit**MS 21251**Turnbuckle  
Body, Clip LockingSteel  
Brass  
AluminumSUPERSEDES AN155, NAS5649  
(SEE NOTES)**MS 21252-21253**Clevis End,  
Turn Buckle,  
Clip LockingSteel  
Alloy SteelSUPERSEDES AN161, AN162; NAS645  
NAS646 (SEE NOTES)**MS 21254-21255**Eye End,  
Turn BuckleSteel  
Alloy SteelSUPERSEDES AN165, AN170; NAS648,  
NAS647 (SEE NOTES)**MS 21256**Clip, Locking  
Turn Buckle

CRES. Steel

**MS 21258**Washer, Key  
Retaining

Steel

SUPERSEDES AN7503

**MS 21259-21260**Terminal  
Wire Rope,  
Stud

SUPERSEDES AN666/AN669

**MS 21261**Woodruff  
Key, ChamferedAlloy Steel  
Available  
in CRES.

SUPERSEDES AN280 (In Part)