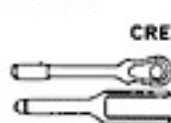
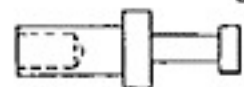
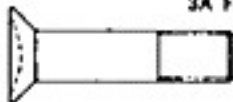


NAS577-578Nut, Self-Locking
Floating Barrel;
Retainer

Steel

NAS645-651Fork and Eye
Turn Buckles;
Barrel, Terminal,
Turnbuckles, Cable
and Clip, LockingSteel
CRES. Steel**NAS704-709**Terminal, Stud;
Turret Types

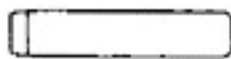
Brass

NAS583-590Bolt 100° Head
"Hi-Torque," Close
Tolerance
160,000 PSISteel
3A Fit**NAS653-658**Hexagon Head
Bolt, Close
Tolerance
Drilled Shank
OptionalTi Alloy per
*NAS621
3A Fit

*4Al-4Mn and 6Al-4V

NAS720Pan Head
Screw; Assembled
Lock Washer and
Flat Washer;
SlottedSteel
Brass
CRES. Steel
2A Fit**NAS600-606**Pan Head
Machine Screw,
Aircraft—
Phillips RecessedAlloy Steel
3A Fit**NAS662**100° Flat Head
Machine Screw;
Regular and Self-
LockingSteel
CRES. Steel
Brass
2A FitSelf-Locking
Head MarkingPhillips
Recess

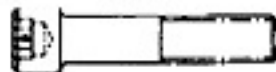
Slotted

Lockwasher
AN395 (Medium)
or MS35338Flat Washer
Reduced O.D.
NAS620**NAS607**Pin, Headless
DowelSteel
Available in
CRES.**NAS663-668**100° Flat Head
Bolt, Close
ToleranceTi Alloy per
*NAS621
3A Fit

*4Al-4Mn and 6Al-4V

"Hi-Torque" "Phillips"
Recess Recess**NAS721-725**Miniature Screws
SlottedCRES. Steel
Brass
Nickel Silver

Fillister Pan 100° flat Binding

NAS608-609Screw, Hex
Socket Cap;
Plain and Self-
Locking—
Drilled Head
1936 SeriesSteel
CRES. Steel
Alloy Steel
3A FitHead
Marking
Per NAS 1347
INACTIVE FOR DESIGN—See NAS1351/2**NAS669-670**

Ring, Retainer

Steel
Beryllium
Copper**NAS810-820**Cap Protectors
Fittings

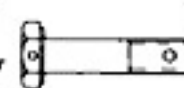
Plastic

NAS671Nut, Plain
Hexagon—
Small PatternSteel
CRES. Steel
Brass
2B Fit**NAS945-947**Cap Protectors,
Fittings

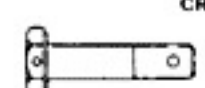
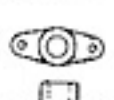
Plastic

NAS610-616Pan Head
Machine ScrewAlloy Steel
2A & 3A Fit

INACTIVE FOR DESIGN—See NAS600-606

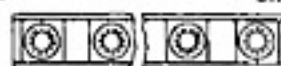
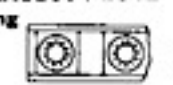
NAS673-678Hexagon Head
Bolt, Close
Tolerance
Drilled Head or
Drilled ShankTi Alloy per
*NAS621
3A Fit

*4Al-4Mn and 6Al-4V

NAS1003-1020Bolt, Machine
Hexagon Head
Drilled Head/
Drilled Shank
UndrilledCRES. Steel
(A-286)
3A Fit**NAS620**Washer Flat
Reduced O.D.Steel
Al Alloy
Brass
CRES. Steel**NAS679**Nut, Self-Locking
Low Height
550° F, 800° FSteel
CRES. Steel
(A-286)
3B Fit**NAS1021-1022**Nut, Self-Locking
Full and Shear
250° F, 500° F, 800° FAl Alloy
CRES. Steel
Steel
Monel
3B Fit**NAS622**Hook Support
Electronic
Equip. ClampSteel
CRES. Steel**NAS680-687**Nut, Plate
Self-Locking
550° F, 800° FSteel
CRES. Steel
(A-286)
3B Fit**NAS1023-1033**Nut, Self-Locking
Plate Types
250° F, 450° F, 800° FAl Alloy
CRES. Steel
Steel
3B Fit**NAS623**Pan Head
Machine Screw,
Short Thread
160,000 PSI
Phillips Recess

Alloy Steel

Head Markings

NAS688-695Nut, Self-Locking
Gang
ChannelSteel
Al Alloy
CRES. Steel
3B Fit**NAS1034-1041**Nut, Self-Locking
Gang Channel
250° F, 550° F,
800° FAl Alloy
Steel
CRES. Steel
3B Fit

Non-CTSK. 100° CTSK.

NAS624-644Bolt 12 Pt.
External
Wrenching
180,000 PSI

Alloy Steel

NAS696-698Nut, Plate
Self-Locking
550° F, 800° FSteel
CRES. Steel
(A-286)
3B Fit**NAS1042-1044**

Shackle Anchor

Steel
Alloy Steel